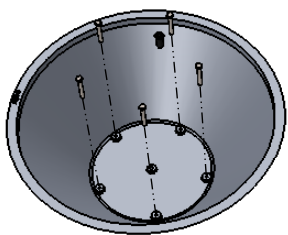
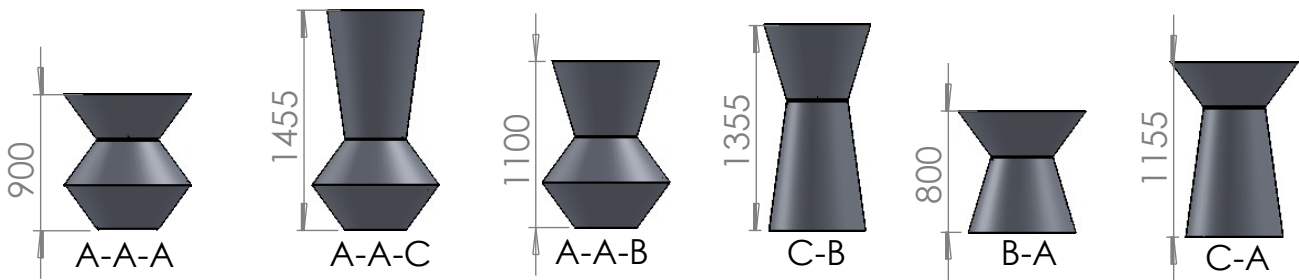
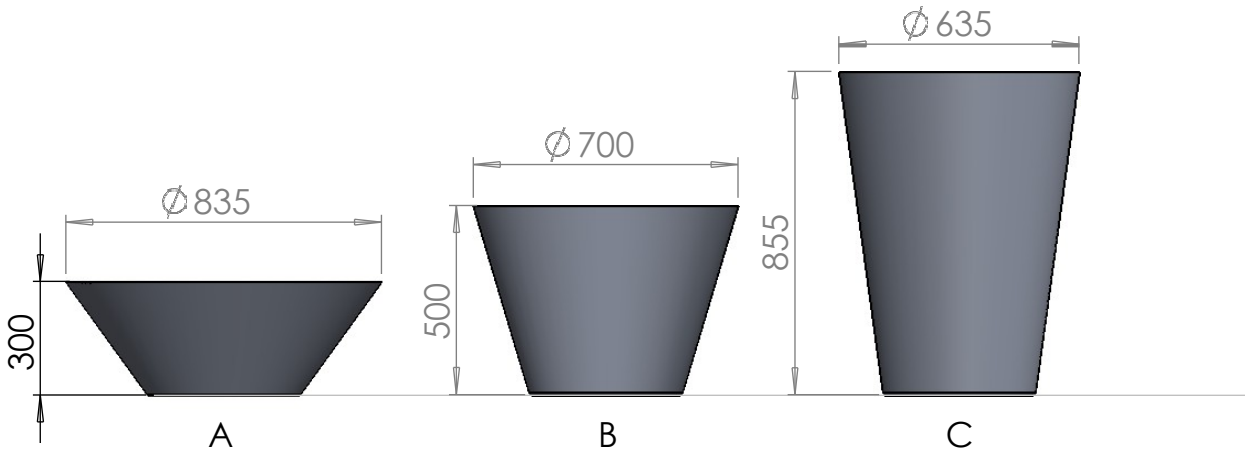


ASSEMBLY INSTRUCTIONS

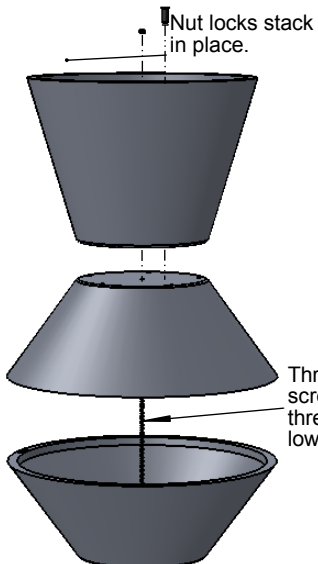


Head office: Nola Industrier AB Repslagargatan 15b Box 17701
 S-118 93 Stockholm T:+46(0)8 702 19 60 F:+46(0)8 702 19 62
 E:headoffice@nola.se Sales/showroom: Skeppsbron 3
 S-211 20 Malmö T:+46(0)40 17 11 90 Orderfax:+46(0)40 12 75 45

www.nola.se



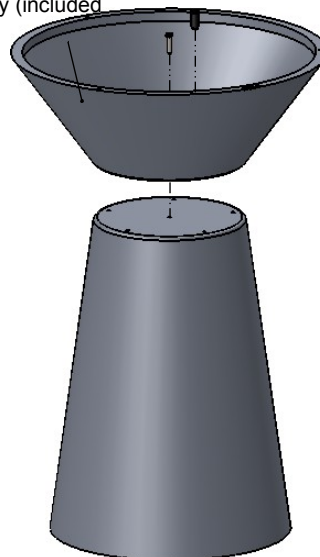
Bolted to the ground with M10 expander. Please note! Not supplied.



Nut locks stack in place.

Threaded bar is screwed into the threaded hole in the lower vessel.

The top vessel is bolted to the lower M10x60 + tray (included)



Bent fittings screwed into the threaded hole on the inside of the planting vessel. The fitting must be assembled so that the hole for securing to the ground is outside the vessel. Bolt into the ground with expander. Please note! Expander not supplied.

