

Assembly instructions

Korg Swing sofa

Table of contents

Product overview Korg Swing sofa	s. 2
Placement - Surface mount	s. 3
Included parts	s. 4
Assembly Swing stand	s. 5
Assembly Suspension and Seat	s. 6



Korg Swing sofa

Product overview

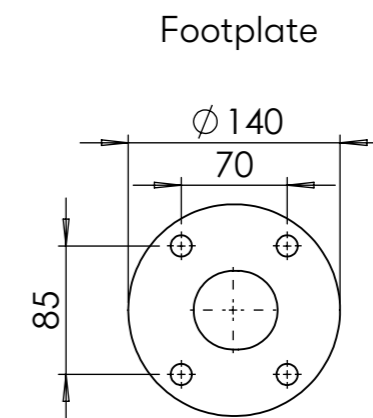
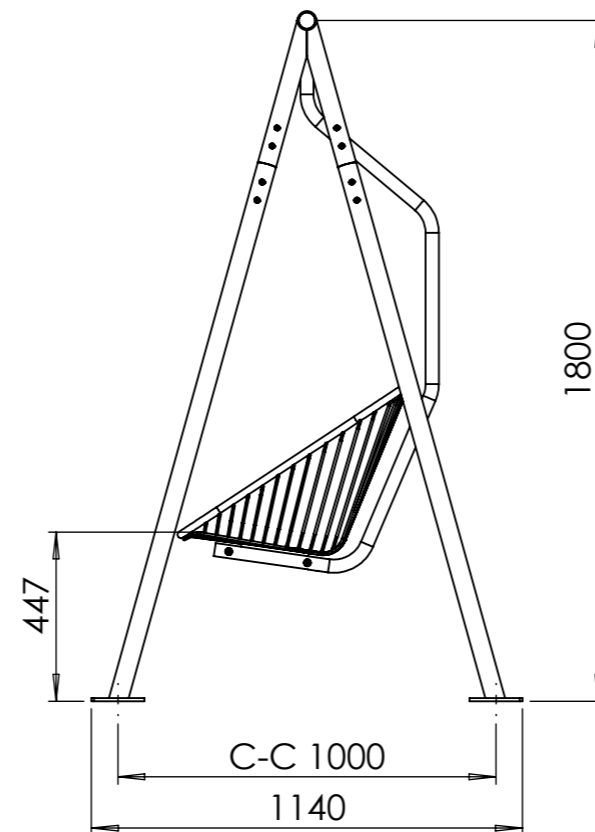
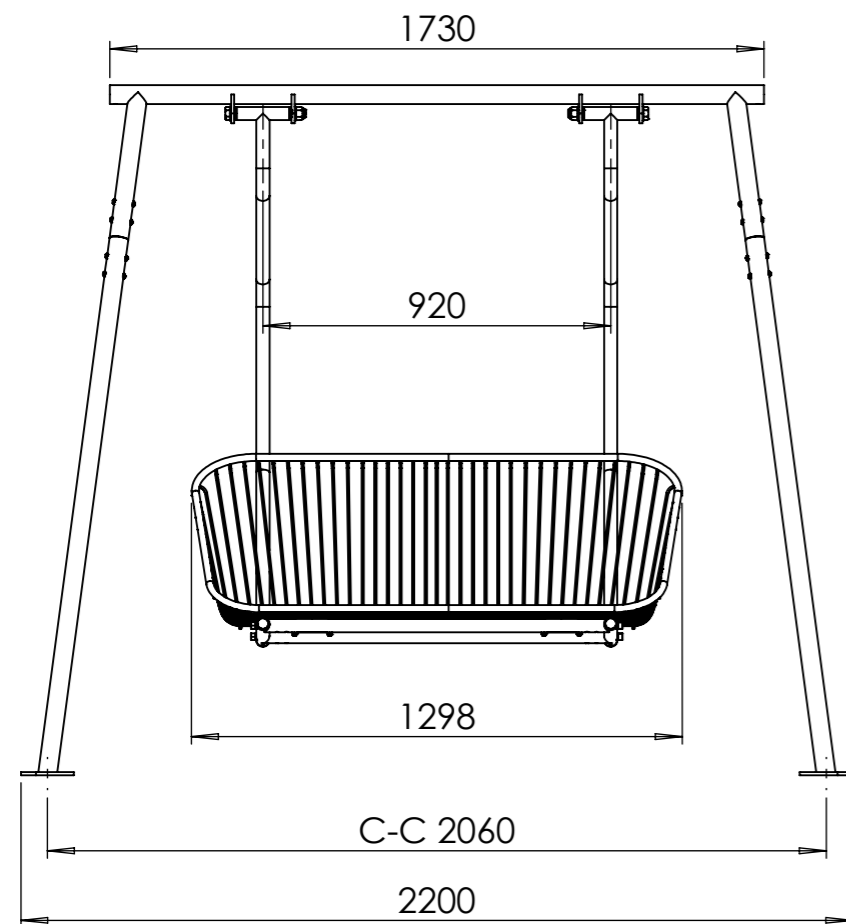
Ritad av Joachim Henriksson
Ritad datum 2024-01-25

Product overview

Korg Swing sofa

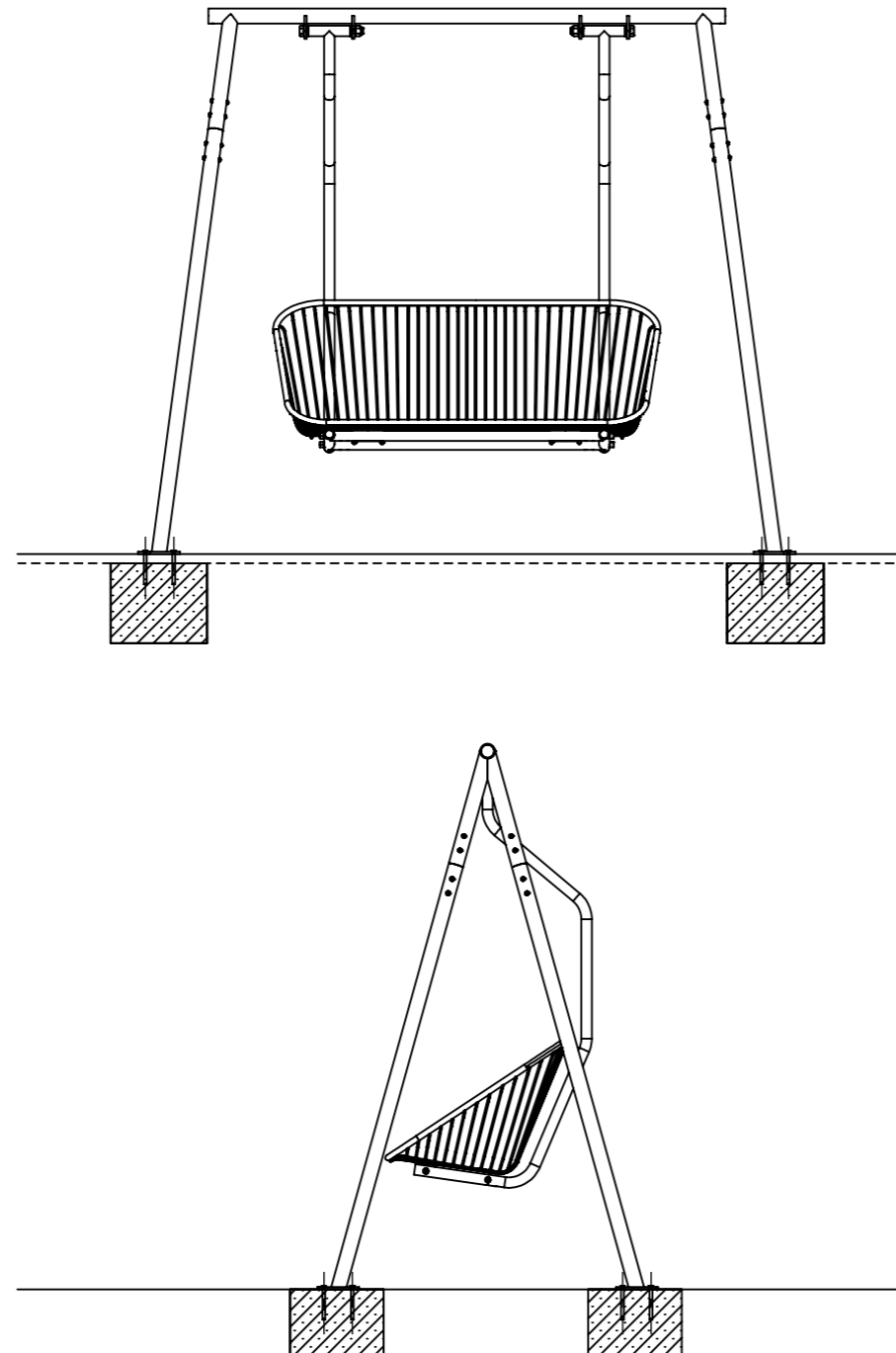
Korg Swing sofa is part of the Korg series by Thomas Bernstrand. There is also a park bench, an armchair, a table and a furniture system.

The product is delivered assembled.



Korg Swing sofa Placement

Ritad av Joachim Henriksson
Ritad datum 2024-01-25



Surface mount

Place the Swing sofa in the intended place. Mark out the holes on the substrate. The holes for attachment are $\varnothing 13$ etc. and are intended for M12 fasteners.

Mounting on a wooden substrate

Mount with French wood screws to wooden substrate.

Mounting on paving stones or paving slabs

Undercast slabs with concrete. There must not be setting sand between the tiles and the concrete. Drill the base for expander or chemical anchor. Mounting with expander provides a removable attachment. Assembly with chemical anchors gives a permanent attachment.

Mounting in a concrete substrate

Drill the concrete for expanders or chemical anchors.

Mounting on gravel or grass

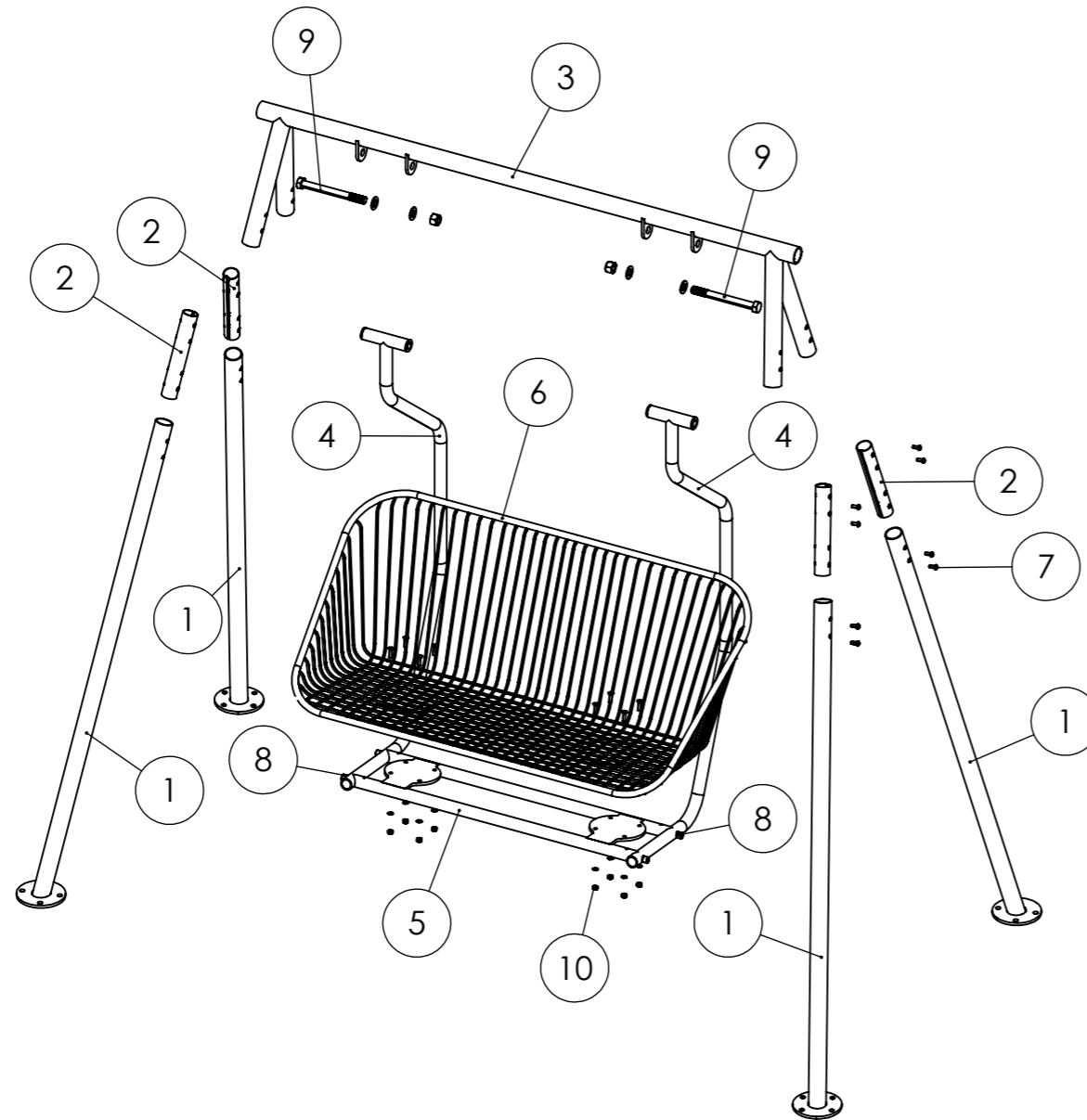
Excavate the ground for a concrete foundation. Pour a foundation in concrete pipes or cardboard pipes. Top on the foundation must end with a radius. Drill the foundation for expanders or chemical anchors.

Secure the foot to the foundation and reset the ground.

Korg Swing sofa

Included parts

Ritad av Joachim Henriksson
Ritad datum 2024-01-26



Korg Swing sofa

The product is delivered assembled.

All parts included

1. 4 x Legs
2. 4 x Connecting pipes
3. 1 x Swing stand top
4. 2 x Suspension armature
5. 1 x Undercarriage
6. 1 x Seat
7. 32 pcs M8 x 20 mm with washers
8. 4 pcs M12 x 80 mm with washers
9. 2 pcs M20 x 200 mm with nut and washers
10. 8 pcs M8 x 30 mm with nut and washers

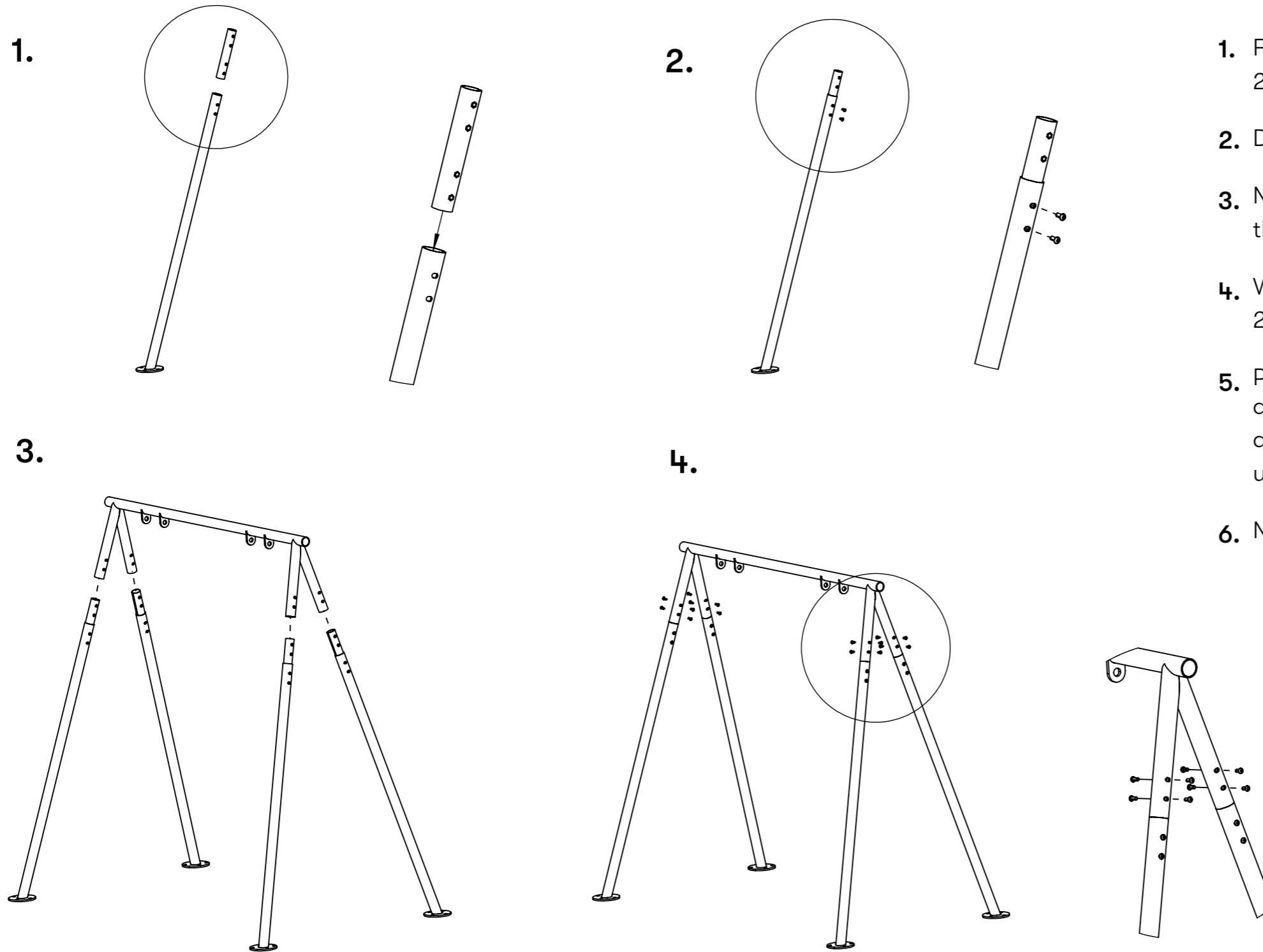
Korg Swing sofa

Assembly Swing stand

Ritad av Joachim Henriksson
Ritad datum 2024-01-25

Assembly Swing stand

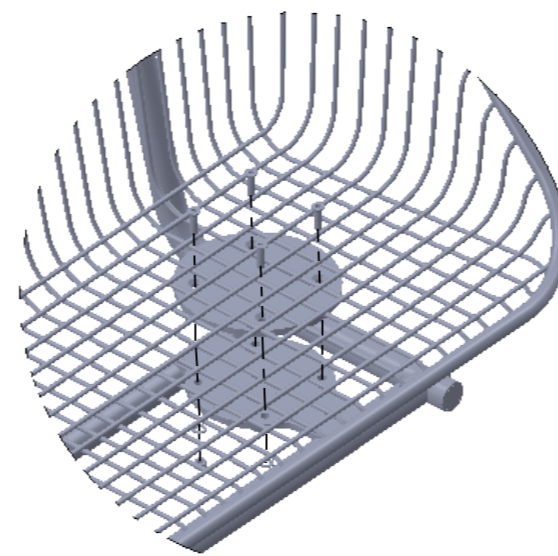
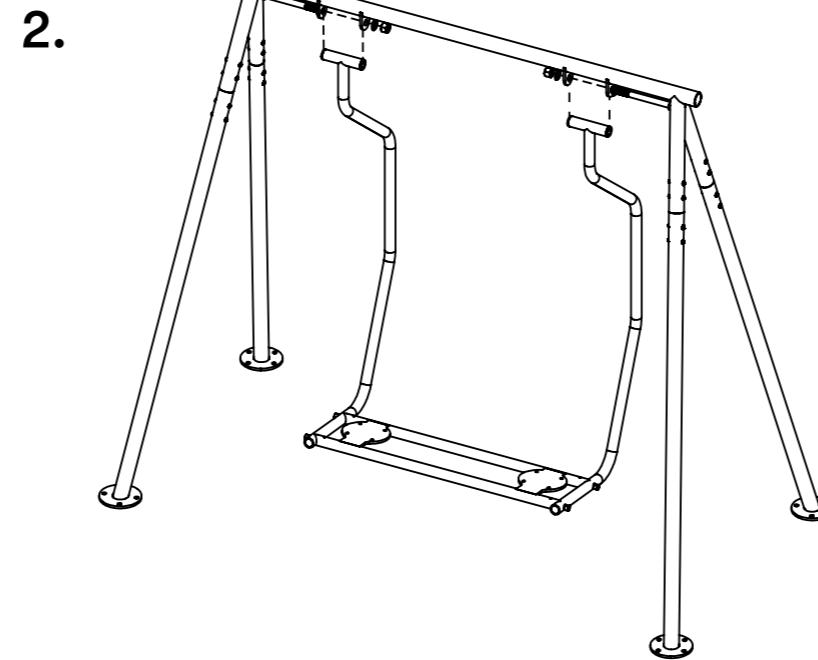
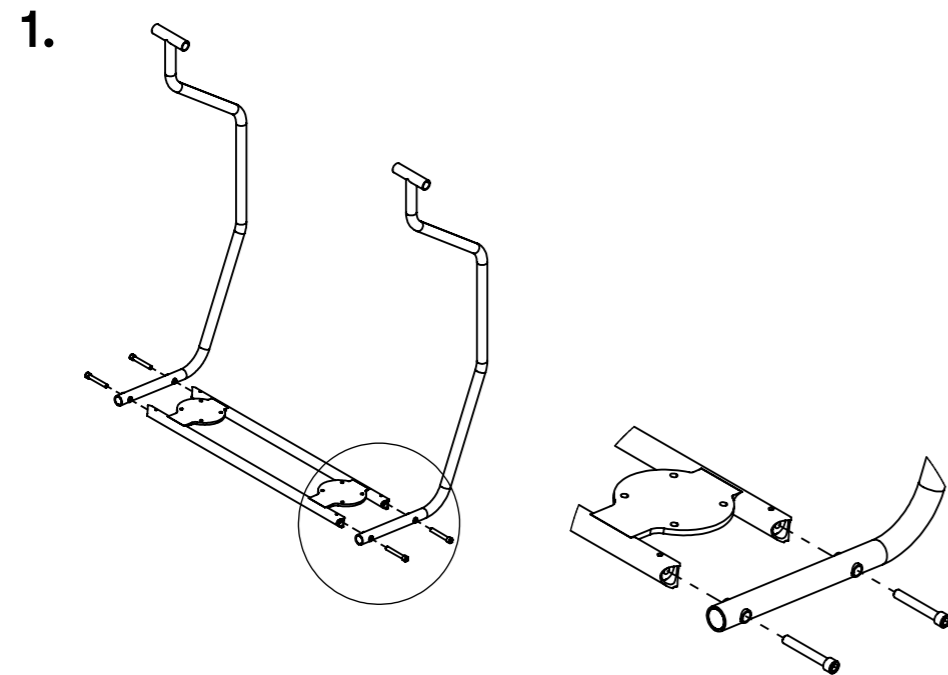
1. Fit a connecting pipe in each leg with 4 M8 x 20 mm screws.
2. Do not tighten, set the screws loosely.
3. Now insert the legs with the connecting pipes in the swing stand top.
4. Without tightening, insert the rest of the M8 x 20 mm screws in the top screw holes.
5. Place the swing on level ground and adjust by turning the legs so it stands flat with all feet, the slots are closed and the pipes line up nicely.
6. Now tighten all the screws properly.



Korg Swign sofa

Assembly Suspension and Seat

Ritad av Joachim Henriksson
Ritad datum 2024-01-25



Assembly Suspension and Seat

1. Assemble the suspension by connecting the two suspension armature via the undercarriage with 4 included M12 x 80 mm screws. Do not fully tighten yet.
2. Attach the suspension fixture in the swing stand by placing the upper horizontal pipes between the ears in the swing stands top and fasten with included 2 pcs M20 x 200 mm screws with nuts and washers.

When the suspension fixture is in place, tighten the 4 pcs M12 x 80 mm screws in the undercarriage.

3. Place the seat on top of the undercarriage and screw in the 8 M8 x 30 mm screws with nuts and washers on the underside.