

Assembly Instructions

Korg Swing Sofa

Table of Contents

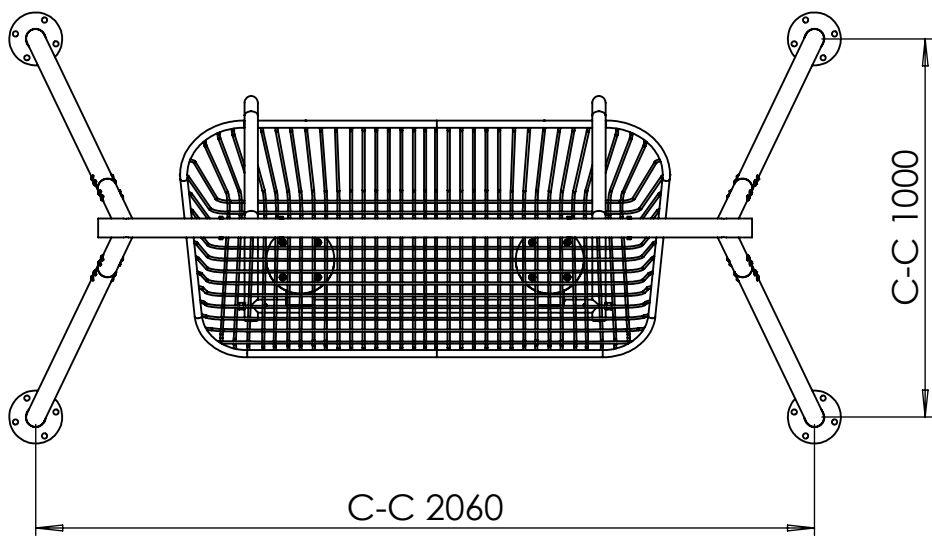
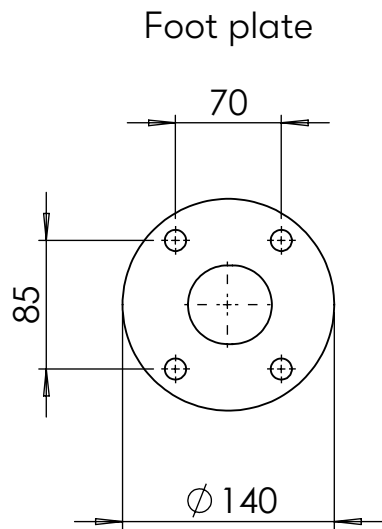
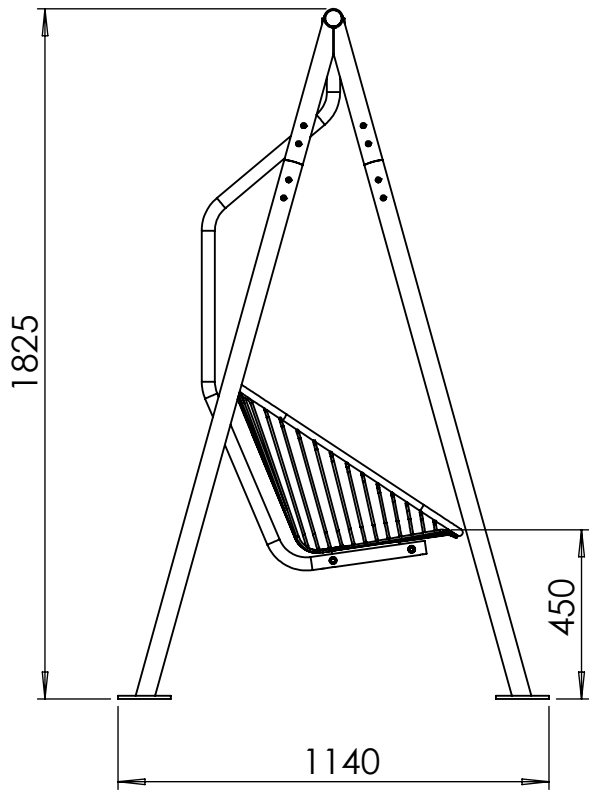
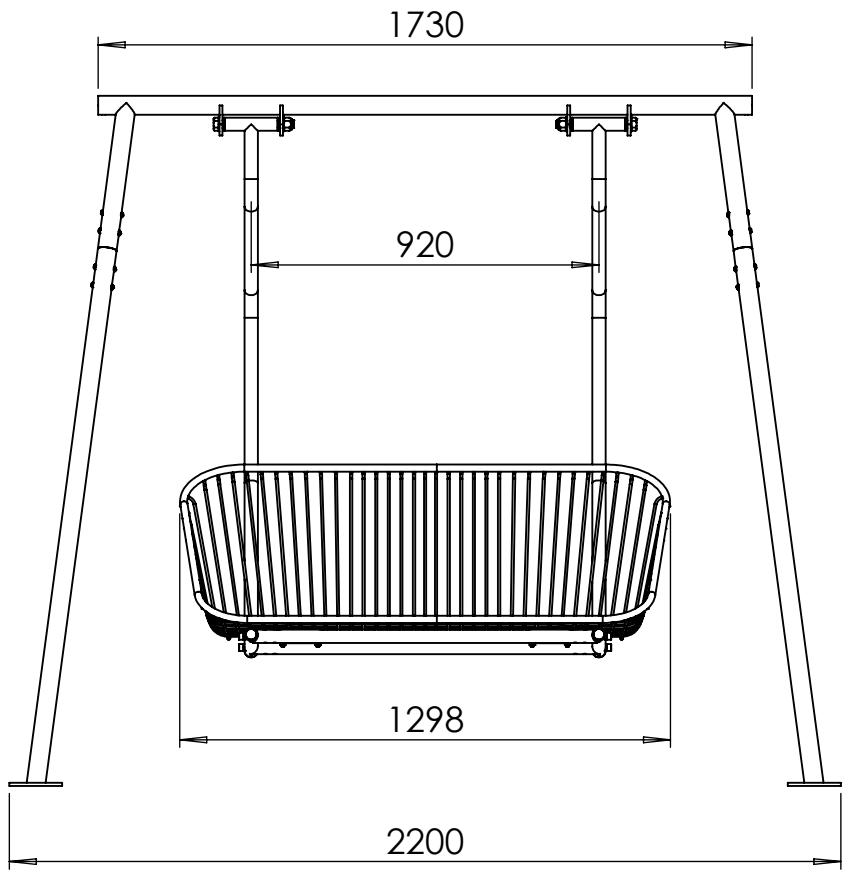
Product Overview Korg Swing Sofa	p. 2
Safety Distances	p. 3
Mounting and Foundation	p. 4
Included Parts	p. 5
Care and Maintenance	p. 6
Disassembly and Recycling	p. 7



Korg Swing Sofa

Product Overview

By Odin Sollie
Drawn on 2026-01-14



U12-38

Korg Swing Sofa

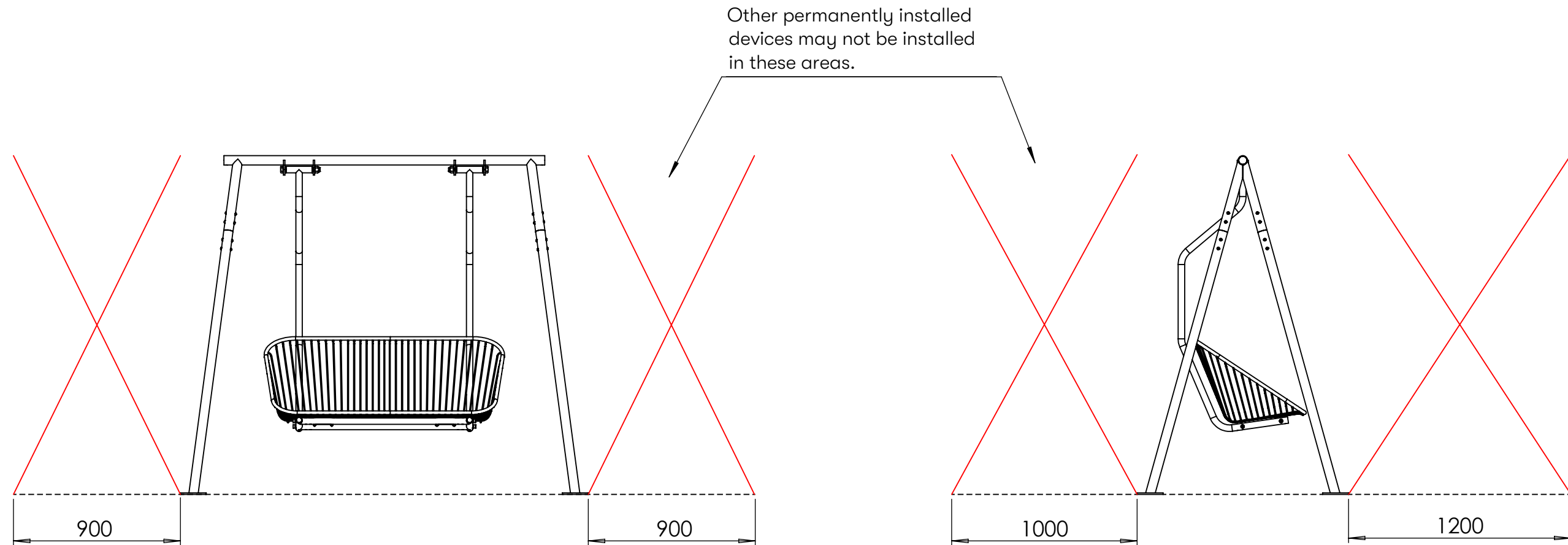
Electro-galvanized and powder-coated steel
Weight: 75,5 kg

The product is delivered fully assembled.
Anchoring is required.

Korg Swing Sofa

Safety Distances

By Odin Sollie
Drawn on 2026-01-14



U12-38

Korg Swing Sofa

Safety Distances

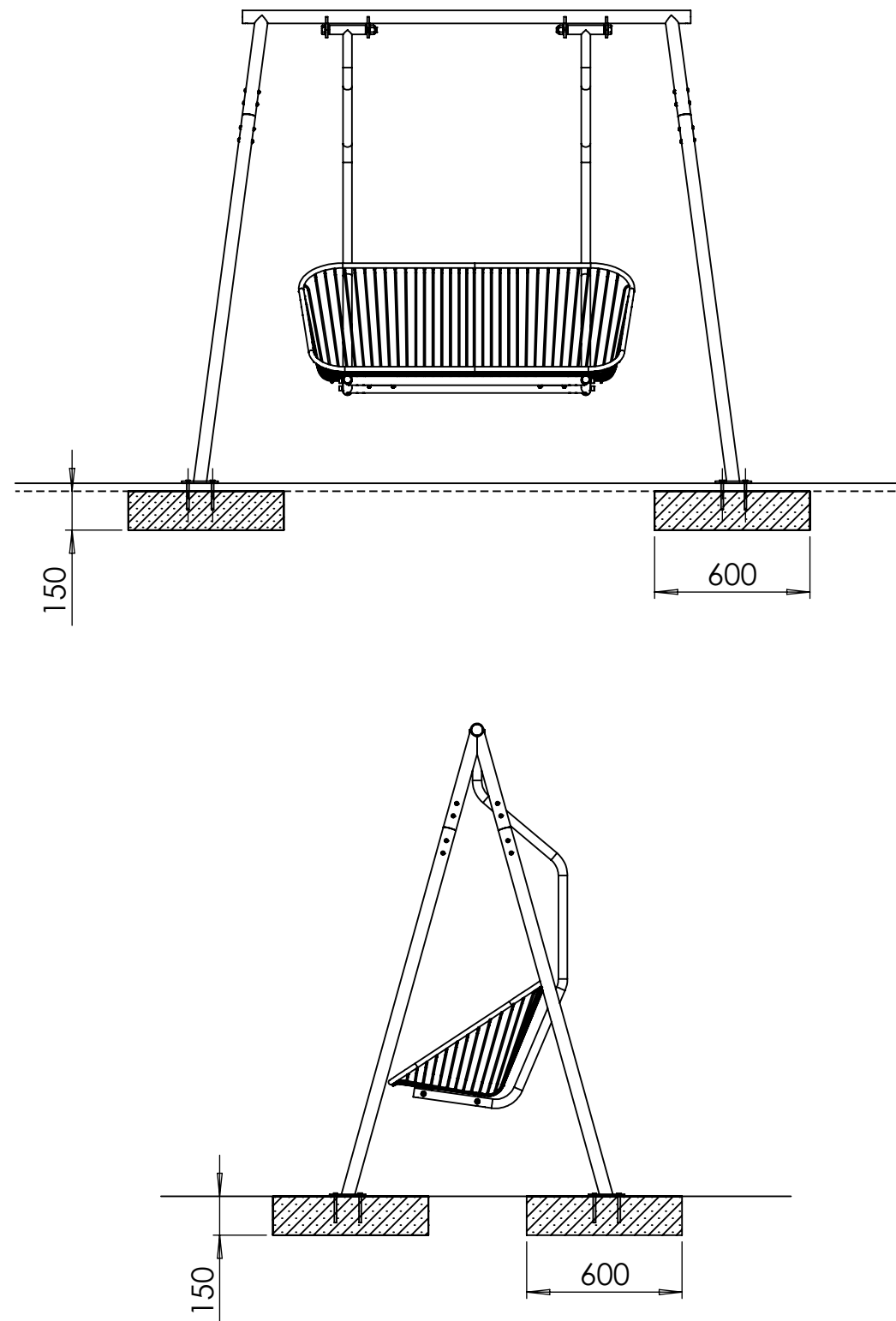
The swing sofa is not intended for play, but for relaxation and gentle swinging. To avoid personal injury, there must be a free space of at least 1200 mm in front of the outer edge of the swing sofa and at least 1000 mm behind it.

Within this area, no fixed objects such as walls, columns, railings, furniture, or other equipment may be present.

Korg Swing Sofa

Mounting and Foundation

By Odin Sollie
Drawn on 2026-01-14



Mounting and Foundation

Each foundation for the swing sofa must weigh at least 122 kg per unit (x 4 units). When using standard concrete slabs, the nearest suitable size is, for example, 600 × 600 × 150 mm, with a weight of 135 kg.

Place the swing sofa in the intended position. Mark the hole positions on the substrate. Pre-drill and prepare according to the selected anchoring method. The anchoring holes are Ø 13 mm and are intended for 12 mm fasteners.

Installation on Wooden Substrates

Pre-drill and fasten to the wooden substrate using 12 mm wood screws.

Installation on Cobblestones or Paving Slabs

Excavate the ground to frost-free depth and fill with drainage material up to the intended bottom level of the foundation. Cast in place or install prefabricated foundations. Restore the surface using the paving slabs. No bedding sand may be present between the paving slabs and the concrete. Drill through the paving slab into the foundation for expansion anchors or chemical anchors. Installation with expansion bolts allows for removable mounting. Installation with chemical anchors allows for permanent mounting.

Installation on Concrete Substrates

Drill the concrete for expansion anchors or chemical anchors.

Installation on Gravel or Grass

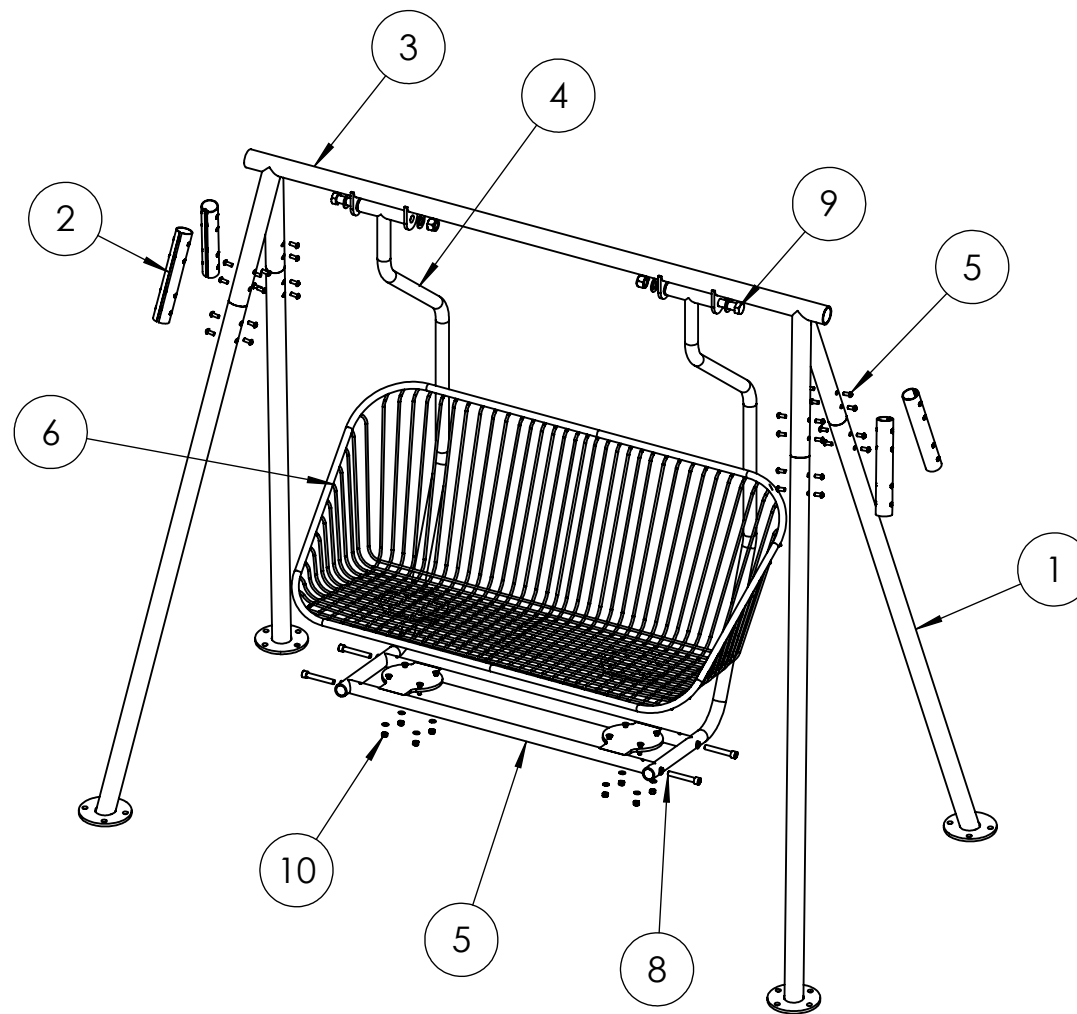
Excavate the ground to frost-free depth and fill with drainage material up to the intended bottom level of the foundation. Cast in place or install prefabricated foundations. The top of the foundation must be finished with a radius. Drill the foundation for expansion anchors or chemical anchors.

Mount the foot to the foundation and restore the ground surface.

Korg Swing Sofa

Included Parts

By Odin Sollie
Drawn on 2026-01-14



Korg Swing Sofa

The product is delivered pre-assembled.

Included Parts

1. 4 × Legs
2. 4 × Connecting tubes
3. 1 × Swing frame top
4. 2 × Suspension hooks
5. 1 × Base frame
6. 1 × Seat basket
7. 32 × M8 × 20 mm Bolts with washers
8. 4 × M12 × 80 mm Bolts with washers
9. 2 × M20 × 200 mm Bolts with nuts and washers
10. 8 × M8 × 30 mm Bolts with nuts and washers

Korg Swing Sofa

Care and Maintenance

By Odin Sollie
Drawn on 2026-01-14

Care and Maintenance

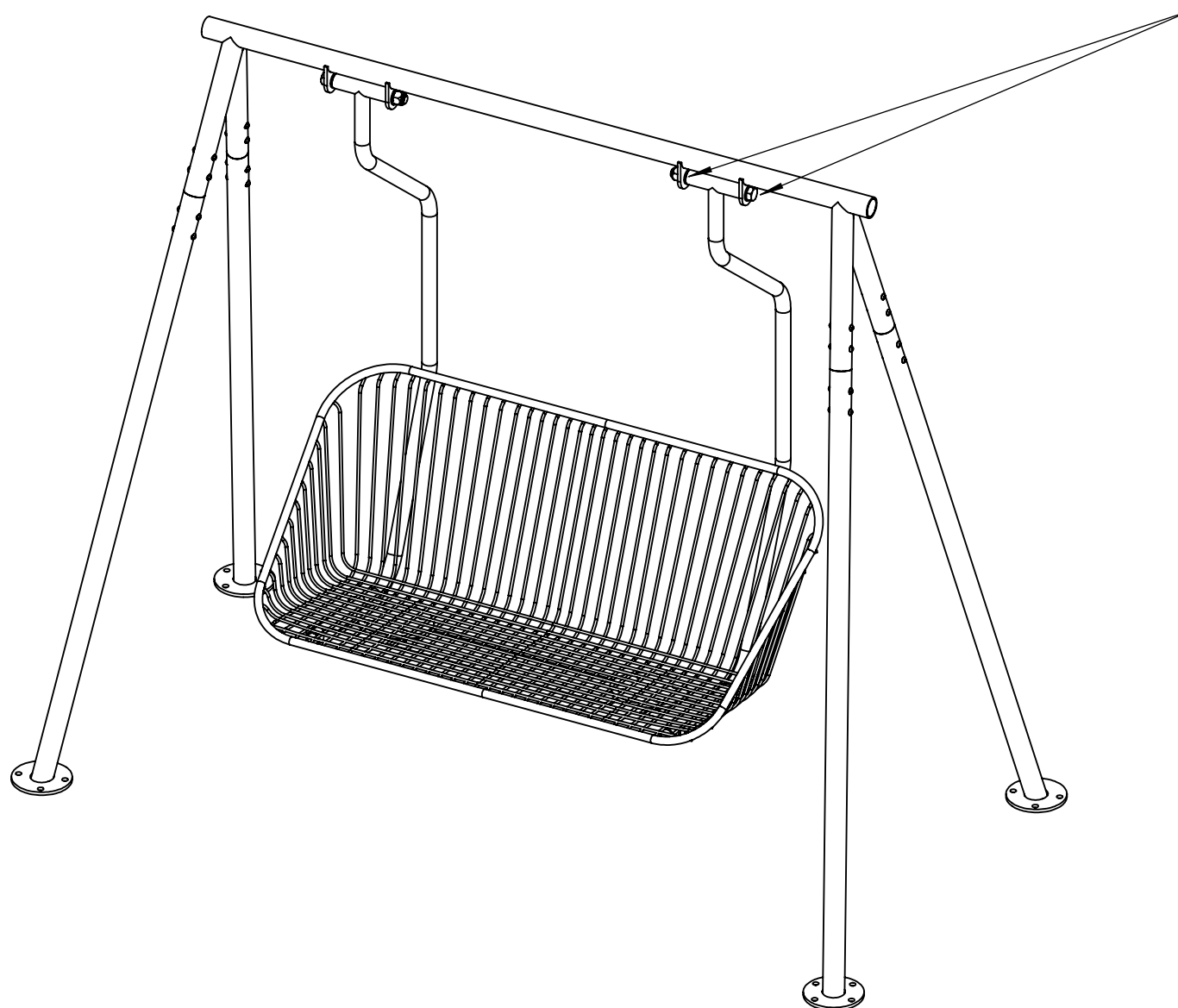
The swing sofa should be inspected regularly and maintained as needed due to its moving parts. How often it should be checked depends on how exposed the location is, but preferably twice a year.

Regularly check all screws. If any screw has become loose, remove it completely and coat the threads with a little Loctite or another thread-locking agent before reinserting and tightening it securely.

If the swing sofa begins to squeak, spray the different surfaces of the swing axle with WD-40 or a similar lubricant. Do not disassemble any parts; spray from different angles onto the various surfaces.

If the swing sofa's powder coating is damaged, it should be repaired as soon as possible to prevent rust from forming and spreading. Sand the damaged area so that all loose powder coating is removed and the edge around the sanded area is completely stable. Degrease the surface, spray with cold galvanizing (zinc) according to the instructions, and then touch up with alkyd paint in a suitable color once it has dried.

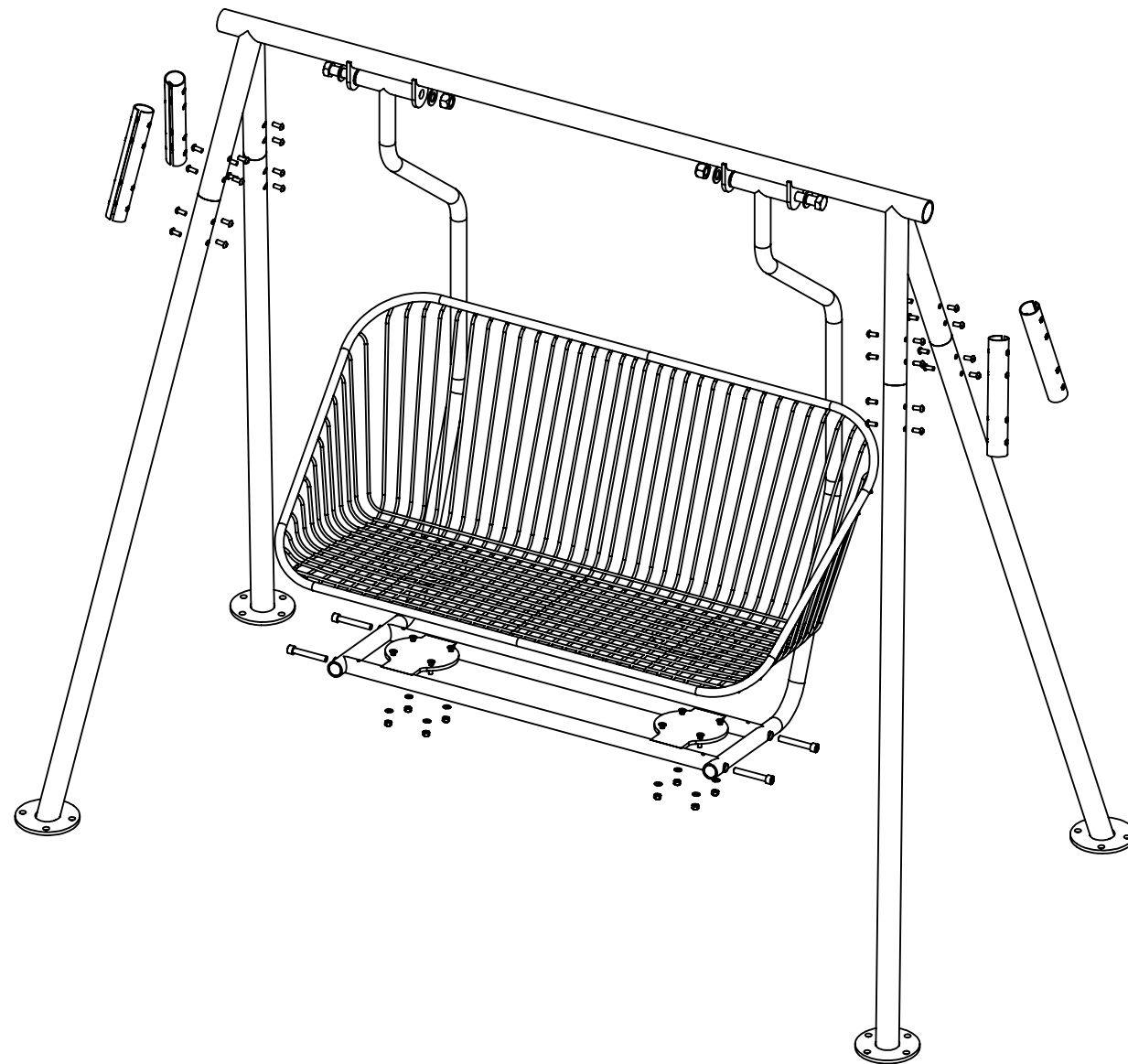
For questions regarding touch-up paint or color, contact Nola.



Korg Swing Sofa

Disassembly and Recycling

By Odin Sollie
Drawn on 2026-01-14



Disassembly and Recycling

If the swing sofa becomes damaged and requires repair, contact Nola.

If the swing sofa is to be discarded completely, it should be disassembled into its individual parts and recycled as steel. The steel is electro-galvanized and has a polyester-based powder coating. Contact your local recycling center for guidance on how to properly sort the swing sofa.