

nola®



Tuben Table

Design Gunilla Hedlund

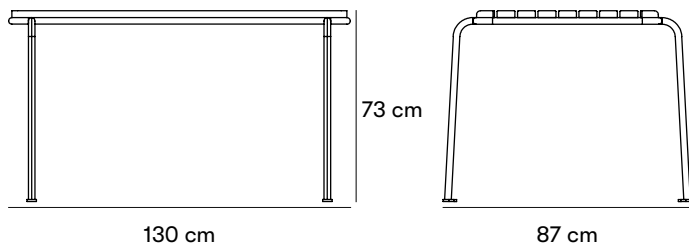
Part of the Tuben furniture group, this efficient table is lightweight and stackable. The table recalls classical garden furniture designed for coastal areas and warm weather climates, but is crafted in a year-round, durable design able to withstand wet climates and temperature extremes. With its timeless design and choice of colour options, the Tuben table suits a wide range of environments.

CERTIFICATION

Produkt listad i
Svanens Husportal



SundaHus



Dimensions and weight

Length: 130 cm

Width: 87 cm

Height: 73 cm

Vikt: 22 kg

Product numbers and combinations

U20-71 Tuben table

Append to product number

VARIANTS

V for white. RAL 9010 on steel and NCS S 0502-Y on wood (White).

G for green. RAL 6021 on steel and NCS S 3020-G20Y on wood (green).

C for any color other than standard, starting cost is added.

INSTALLATION TYPE

N for surface mount.

Standard colours

- RAL 9010
- RAL 6021
- NCS S 0502-Y (Vit)
- NCS S 3020-G20Y (grön)

Materials and surface treatments

Pine

Nola's pine is of high quality and comes from sustainable forestry. Pine is an environmentally friendly, domestically produced material. Damaged or untreated pine is quite easily attacked by decomposition processes; therefore, it is particularly important to repair damaged surfaces.

Steel

Nola uses high-quality steel with good strength in our products. Steel rusts if left untreated and must therefore be surface treated.

Water-based glaze

Varnishing of wood is done with a water-based varnish. A water-based paint that is kinder to the environment. Under normal use, the paint has a good wear resistance and long durability.

Electrogalvanized

Electrogalvanizing (also known as zinc plating) provides corrosion protection through the sacrifice of zinc ions. It is created via a zinc coating on the steel using an electric current.

Powder coating

Powder coating is a coating that is applied as a free-flowing, dry powder. Unlike conventional liquid paint, powder coating is usually applied electrostatically and then cured under heat or with ultraviolet light. The result is an even, hard-wearing coloured surface with the desired gloss level.

Assembly and placement

Freestanding

Freestanding product that is placed directly on the ground.

Surface mount

Can be bolted above ground, to the floor or to a cast-in-place foundation. Bolts not included.

Fully assembled.

Freestanding or attachable. Can be secured to the ground with M10 bolts. Bolts are not included.

Maintenance

Glans 60. Pulverlack går att beställa på sprayflaska.

Water-based glazed pine

Products in varnished pine must be maintained regularly with alkyd paint. Maintenance intervals approximately 1 time per year. Damage and cracks should be repaired immediately. Touch-up paints in spray packaging are available in standard colors to order.

Powdercoated steel

Products that are powder-coated can be touch-up painted with alkyd paint.

[Read more in our general maintenance advice at nola.se/en/care-and-maintenance](https://nola.se/en/care-and-maintenance)

Versions

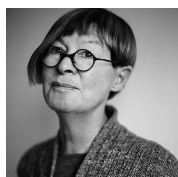
White or green. This table is a part of the Tuben furniture group and can be paired with the benches in the group.

Character

The Tuben table is lightweight and stackable, crafted in a style that recalls the classical garden furniture designed for coastal areas and warm climates.

Designers

Gunilla Hedlund





The Tuben furniture group, designed by Gunilla Hedlund. The lightweight structure of these stackable designs gives them a breezy appearance that resonates with modern buildings and the open-air environments surrounding them.



Photo: Christoffer Skogsmo.

