

nola®




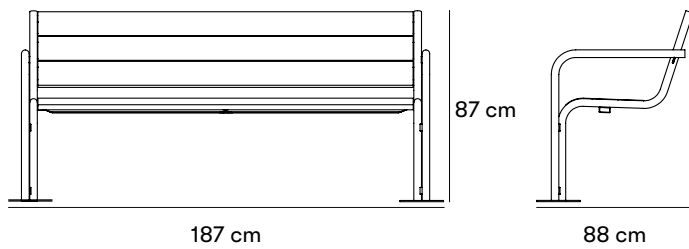
Grow Park Bench

Design Peter Andersson & Mats Aldén

Designed with minimal detailing, the table and bench balance on two legs, but form a single signature style. The seat and backrest create a comfortable place to sit and take in the surroundings. The bench is accompanied by a two-tiered pedestal table that can be positioned in front of the bench, or on either side. Together, the table and bench provide space for coffee breaks or snacks. Grow is a practical choice for food courts, shopping centres and transport hubs.

FEATURES

 Designed for accessibility



Dimensions and weight

Length: 187 cm

Width: 88 cm

Height: 87 cm

Armrest height: 69 cm

Sitting height: 47 cm

Depth: 65 cm

Sofa Width: 187 cm Height: 47/88 cm Depth: 88 x 65 cm

Product numbers and combinations

U17-16 Grow Park Bench

B11-06 Initial cost for powder coating steel in a color other than standard Choose a RAL colour

Append to product number

WOOD AND FINISH

EK for oiled oak.

METAL SURFACE FINISH

P for with perforated steel seating.

C for any color on steel, at an additional cost.

INSTALLATION TYPE

N for surface mount.

M for in-ground.

Standard colours

■ RAL 3007

Materials and surface treatments

Oak

Oak is a heavy, hard and medium tough wood. Moderately dimensionally stable in case of moisture changes. Oak wood blackens if it is exposed to moisture or wetness for a long time. However, it does not affect the other properties of the wood. Thanks to its hardness and toughness, the oak wood is suitable for furniture and other use in exposed environments.

Steel

Nola uses high-quality steel with good strength in our products. Steel rusts if left untreated and must therefore be surface treated.

Wood oil

Wood oil provides good protection against the stresses of the outdoor climate and at the same time highlights the wood's natural appearance and properties.

Electrogalvanized

Electrogalvanizing (also known as zinc plating) provides corrosion protection through the sacrifice of zinc ions. It is created via a zinc coating on the steel using an electric current.

Powder coating

Powder coating is a coating that is applied as a free-flowing, dry powder. Unlike conventional liquid paint, powder coating is usually applied electrostatically and then cured under heat or with ultraviolet light. The result is an even, hard-wearing coloured surface with the desired gloss level.

Assembly and placement

In-ground

Cast in ground.

Surface mount

Can be bolted above ground, to the floor or to a cast-in-place foundation. Bolts not included.

Delivered in larger parts for final assembly on site. Bolt for assembly included. Bolt to floor/ground not included.

U17-16P is delivered assembled and requires fixing. Cast 400 mm into the ground or bolted above ground, into the floor or cast-in-place foundation. The hole size is Ø13 mm for M12 bolt.

Maintenance

Oiled oak

Oiled oak should be oiled twice a year for best protection. Good maintenance can never completely prevent stains from occurring, but oak that is not maintained will turn blacker and turn gray faster, but it still has a very long life. When re-oiling products, a finely boiled oil that penetrates the wood should be chosen over a film-forming oil.

Powdercoated steel

Products that are powder-coated can be touch-up painted with alkyd paint.

[Read more in our general maintenance advice at nola.se/en/care-and-maintenance](https://nola.se/en/care-and-maintenance)

Versions

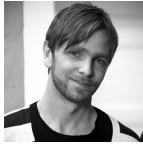
Bench and table.

Character

Designed with minimal detailing, the bench balance on two legs, but form one signature style.

Designers

Peter Andersson



Mats Aldén

Interior and furniture designer, crafter and tutor living in Stockholm. Educated at Aarhus School of Architecture, Denmark. Has his own design studio and workshop in Stockholm since 1995. Has worked as a professor and artistic leader at Steneby HDK, as a lecturer at Konstfack University College of Arts, Crafts & Design and as a guest teacher at Beckmans Design College.

