

nola®



## Parco Round Table

### Design Broberg & Ridderstråle

The round Parco table is available in two sizes, offering a cafe-sized table and a smaller compact version. The Parco series offers a range of tables. In addition to the round versions, a rectangular table and a conference table are included in the series. Parco tables are complemented by the benches, chairs and seats in the Parco furniture group, which can easily be combined to create a variety of unique seating combinations. Products in the Parco Furniture Series that are in painted beech are intended for indoor use only.

Parco Furniture series has been approved in [Svanens Husportal](#) (oak) and is environmentally assessed via [Byggvarubedömningen](#) and [SundaHus](#).

#### CERTIFICATION

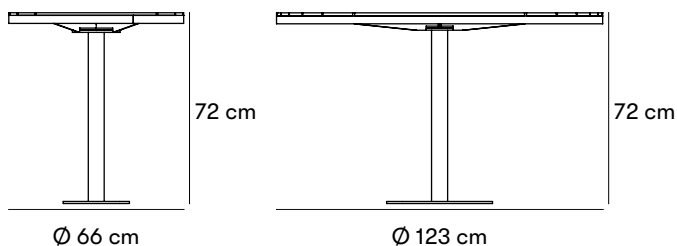
Produkt listad i  
Svanens Husportal



BYGGVARU  
BEDÖMNINGEN



**SundaHus**



#### Dimensions and weight

Height: 72 cm  
 Ø: 66 cm / 123 cm  
 Vikt: Ø 66 cm: 18 kg / Ø 123 cm: 36 kg

#### Product numbers and combinations

Ö19-24/66 Parco round table Ø 66 cm  
 Ö19-24/123 Parco round table Ø 123 cm  
 B11-06 Additional fee for choosing a non-standard colour  
 B11-07 Starting cost for another color of wood. Choose brown or grey for Linax or an NCS color for painted wood. If you want the same color on both steel and wood, choose the RAL color for both. (Painted wood is only for indoors).

#### Append to product number

##### WOOD AND FINISH

JAT for jatoba.  
 SIOO for sioo:x treatment oak.  
 EK for oiled oak.  
 BG for painted beech wood in NCS-S 8000-N (Grey).  
 BR for painted beech wood in NCS-S 2070-Y80R (Red).  
 Painted beech is for indoor use only.

##### METAL SURFACE FINISH

RAL 1023 for yellow.  
 RAL 2001 for red/orange.  
 RAL 6025 for green.  
 RAL 7022 for grey.  
 RAL 9006 for light grey.  
 C for any color other than standard, at additional cost.

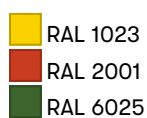
##### VARIANTS





CHESS for Parco Table Ø 66 cm with a table surface with a laminated chessboard.

##### INSTALLATION TYPE

M for in-ground.  
 N for surface mount.

#### Standard colours



	RAL 7022
	RAL 9006
	NCS S 8000-N (Grå)
	NCS S 2070-Y80R (Röd)

## Materials and surface treatments

Painted wood is for indoor use only.

### Jatoba - FSC-certified

Our FSC-labeled Jatoba is an untreated, very hard, and strong hardwood with a long shelf life. It has a brown color with black accent stripes that changes to a deep and rich red color over time.

### Beech

The wood of the beech is hard and tough. The wood is striated, which means that the grains are evenly distributed over the entire annual ring. The annual rings are visible, and the wood has an even structure. The color of the wood is yellow, red or brownish-white.

### Oak

Oak is a heavy, hard and medium tough wood. Moderately dimensionally stable in case of moisture changes. Oak wood blackens if it is exposed to moisture or wetness for a long time. However, it does not affect the other properties of the wood. Thanks to its hardness and toughness, the oak wood is suitable for furniture and other use in exposed environments.

### SiOO:X treatment

Sioo:x is a wood protection with environmentally friendly silicon technology. Water-based and biocide-free. We use Sioo mainly for our oak furniture. Sioo:x treatment of is suitable for all woods, outside as well as inside, and gives a light surface without pigments. The surface is UV-resistant, water-repellent and non-stick. Active and preventive action against algae, mould and pests. Also rot-proof, wood-strengthening and fire-retardant. This wood protection provides long durability and easy maintenance.

### Wood oil

Wood oil provides good protection against the stresses of the outdoor climate and at the same time highlights the wood's natural appearance and properties.

### Steel

Nola uses high-quality steel with good strength in our products. Steel rusts if left untreated and must therefore be surface treated.

### Electrogalvanized

Electrogalvanizing (also known as zinc plating) provides corrosion protection through the sacrifice of zinc ions. It is created via a zinc coating on the steel using an electric current.

### Powder coating

Powder coating is a coating that is applied as a free-flowing, dry powder. Unlike conventional liquid paint, powder coating is usually applied electrostatically and then cured under heat or with ultraviolet light. The result is an even, hard-wearing coloured surface with the desired gloss level.

## Assembly and placement

**In-ground**

Cast in ground.

**Surface mount**

Can be bolted above ground, to the floor or to a cast-in-place foundation. Bolts not included.

The tabletop is pre-assembled, ready to be bolted to the base after delivery with the bolts included. Bolts for attaching the base to the surface are not included.

**Maintenance**

Powder-coated steel in gloss 40. Powder coating can be ordered in a spray bottle.

Painted beech wood, gloss 25.

**Oiled oak**

Oiled oak should be oiled twice a year for best protection. Good maintenance can never completely prevent stains from occurring, but oak that is not maintained will turn blacker and turn gray faster, but it still has a very long life. When re-oiling products, a finely boiled oil that penetrates the wood should be chosen over a film-forming oil.

**Jatoba**

Jatoba basically requires no maintenance apart from regular wiping down.

**SiOO:X treatment oak**

Sioo:x-treated products are treated twice upon delivery; once with a wood protection (Premium Träskydd Altan) and once with a surface protection (Premium Ytskydd Altan). Directly after a product has been installed, it should be treated once more with Sioo:x Premium Surface Protection Altan for best durability. After that, every 12 months. The surface protection forms a wear surface, which means that products that are exposed to severe mechanical wear may need to be treated more often than every ten years. The surface treatment has a tested effect according to the standards EN 46 and EN 113.

For information about the Sioo treatment see the website [www.sioox.se](http://www.sioox.se).

**Painted beech - indoors only**

Painted beech is touch-up painted with water-based indoor paint. Maintenance intervals approximately 1 time per year. Damage and cracks should be repaired immediately. If the primer has worn off and the wood is open, it is important to prime first. Ask us at Nola for which paint and color suits your product.

**Powdercoated steel**

Products that are powder-coated can be touch-up painted with alkyd paint.

[Read more in our general maintenance advice at nola.se/en/care-and-maintenance](http://nola.se/en/care-and-maintenance)

**Versions**

The tabletop is available in clear-lacquered pine or oiled FSC-certified Jatoba wood. The table can be powder-coated in a range of colours.

**Character**

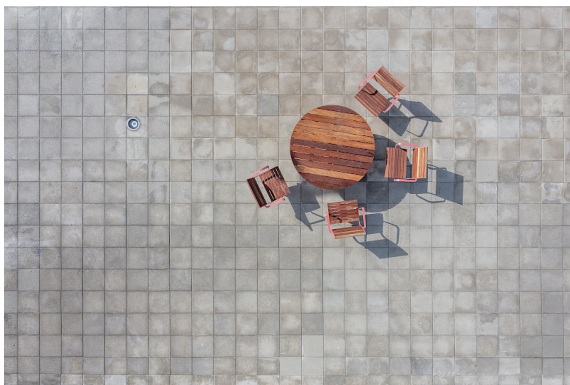
The table is available in two sizes and can be complemented by seating in the Parco series.

## Designers

---

### Broberg & Ridderstråle

Stockholm based Broberg & Ridderstråle Design & Architecture is founded and run by Mats Broberg and Johan Ridderstråle. The duo met at the University College of Arts, Crafts and Design (Konstfack) where they both studied furniture and interior design. Today they work within the fields of architecture and design. Their design method is based on the traditional craft, where they often gather inspiration from their daily lives only to then add a new twist to the design that lifts the product to a new level. Broberg & Ridderstråle have throughout the years designed numerous products and furniture series for Nola.



*Pink Parco swivel chairs and round tables contrast nicely with the grey tiling at Fornudden School in Tyresö. Photo: Jann Lipka.*





