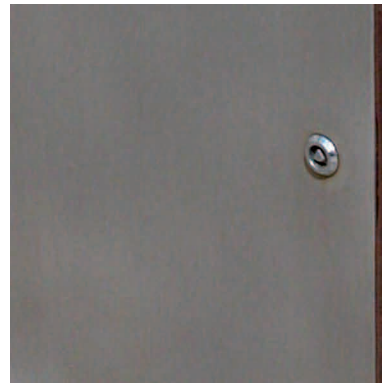


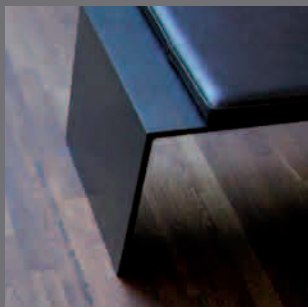
S

Affaldsbeholder · Litter bin



Design:
Sand & Ravn, M.A.A.

SPECIFIKATIONER . SPECIFICATIONS



Sideplader og top er fremstillet af 16 mm støbejern eller 15 mm pladestål. Bagside og låge er udført i 3 mm slebet rustfri stål.

Indsats er i 0,75 mm galvaniseret stålplade.

Støbejern er voksbehandlet. Pladestål er zink- og pulverlakeret i standard RAL farve efter ønske.

Indhold: 65 liter.

Kan leveres med integreret askebæger.



Side plates and top are made of 16 mm cast iron or 15 mm plate steel. Back side and door are made of 3 mm grinded stainless steel.

Inner bin is made of 0.75 mm hot dip galvanized steel.

Cast iron is wax treated. Plate iron is zinc- and powder coated in standard RAL colour on request.

Volume: 65 litre.

Available with integrated ashtray.

PRODUKTER . PRODUCTS

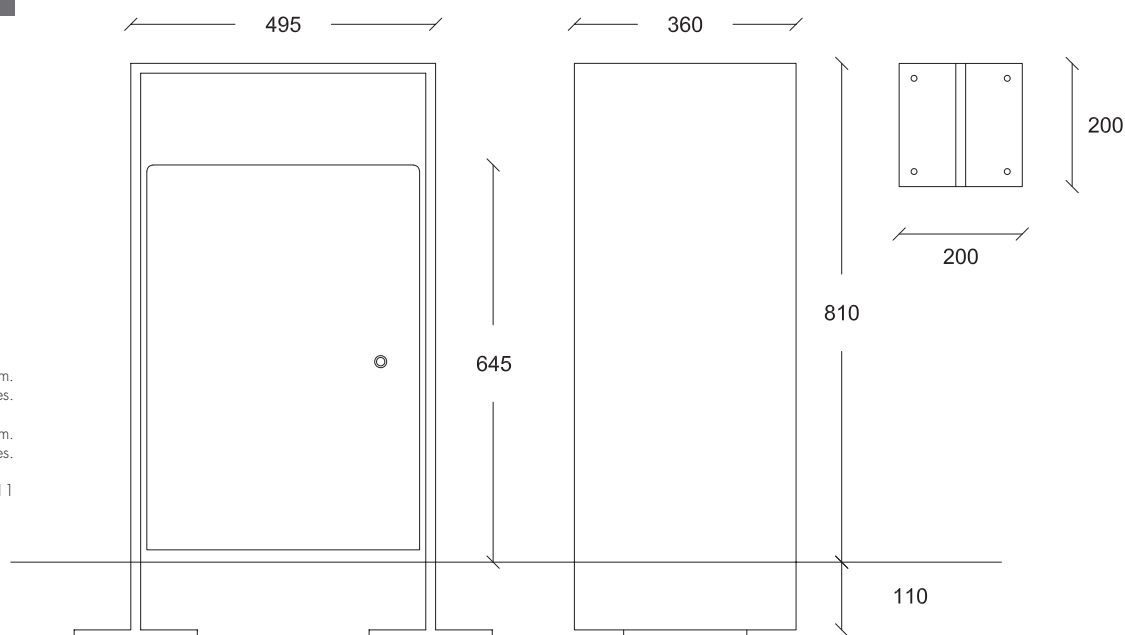
Affaldsbeholder S-serien omfatter:

S Til nedstøbning

S litter bin is available as:

S For embedding in concrete

S



Alle mål er angivet i mm.
Ret til ændringer forbeholdes.

All dimensions in mm.
Subject to changes.

02.2011