

“DEMETRA D” Bench

Sheet code: PAAR015

Drawing code:

Revision: 10/01/2019

Designer:

Bellitalia Design Department



Product: Linear modular bench model “DEMETRA D”, composed by a monolithic seat supported by a base equipped with a levelling system. The bench on request can be equipped with illuminating strips placed longitudinally on the longest side with relative power supply.

Dimensions: length: 1800 mm;
width: 600 mm;
height: 470 mm (variable);
total weight: 1170 kg.

Material: The bench can be manufactured using reconstituted natural marble stones or white granite conglomerate.

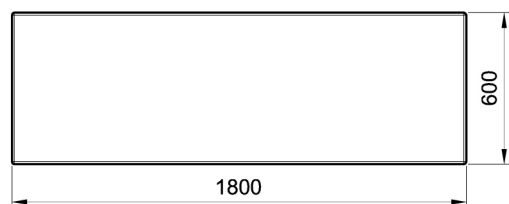
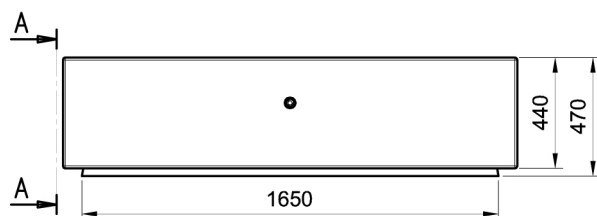
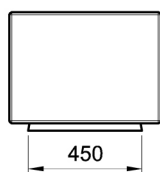
Reinforcing: The self-levelling base is reinforced and fitted with bushes that permit its lifting and levelling. The seat is also reinforced and endowed with bushes that permit its lifting, and that are covered with a Bellitalia plate after the placement.

Finishing: All surfaces are sandblasted, except for the seating surface that can be polished, to give the product a shiny effect, or bush-hammered, for a rough appearance. Surfaces are then covered with a transparent anti-decay coating, or, upon request, with anti-graffiti products. All edges are rounded or made blunt.

Handling: Use appropriate equipment when handling.

Installation: Level the base screws and simply place the bench on the flooring.

A-A



“DEMETRA DW” Bench

Sheet code: **PAAR044**

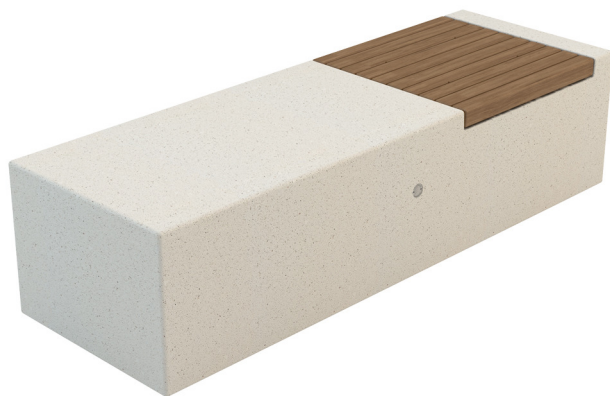
Drawing code:

Revision:

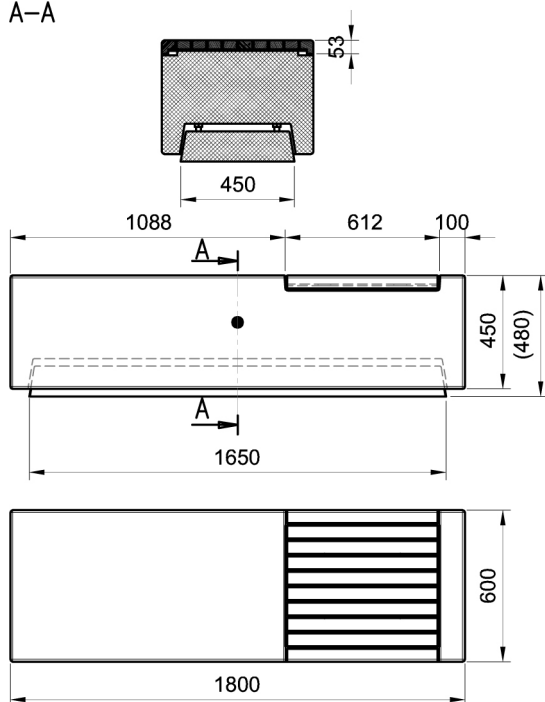
10/01/2019

Designer:

Bellitalia Design Department



A-A



Product:

Linear modular bench model “DEMETRA DW”, composed by a monolithic seat with built-in single wooden seat and by a base equipped with a **levelling system**. The bench on request can be equipped with illuminating strips placed longitudinally on the longest side with relative power supply.

Dimensions:

length: 1800 mm;
width: 600 mm;
height: 470 mm (variable);
total weight: 1155 kg.

Material:

The bench can be manufactured using reconstituted natural marble stones or white granite conglomerate. The insert seat is composed by 10 wooden slats offered with three different types of essence: pine, okumè or exotic wood (please see respective material sheet). All slats have a section of 55x35 mm, except for the head ones that have a section of 53x53 mm. Slats are fastened to the seat through screws and three stainless steel plates, arranged to ease the water discharge under the slats.

Reinforcing:

The self-levelling base is reinforced and fitted with bushes that permit its lifting and levelling. The seat is also reinforced and endowed with bushes that permit its lifting, and that are covered with a Bellitalia plate after the placement.

Finishing:

All surfaces are sandblasted, except for the seating surface that can be polished, to give the product a shiny effect, or bush-hammered, for a rough appearance. Surfaces are then covered with a transparent anti-decay coating, or, upon request, with anti-graffiti products. All wooden elements in pine and okumè can be impregnated and painted with a protective varnish, the exotic wood is impregnated and, upon request, varnished. All edges are rounded or made blunt.

Handling:

Use appropriate equipment when handling.

Installation:

Level the base screws and simply place the bench on the flooring.

“DEMETRA 2DW” Bench

Sheet code: **PAAR045**

Drawing code:

Revision:

10/01/2019

Designer:

Bellitalia Design Department



Product:

Linear modular bench model “DEMETRA 2DW”, composed by a monolithic seat with built-in full wooden seat and by a base equipped with a **levelling system**.

The bench on request can be equipped with illuminating strips placed longitudinally on the longest side with relative power supply.

Dimensions:

length: 1800 mm;
width: 600 mm;
height: 480 mm (variable);
total weight: 1099 kg.

Material:

The bench can be manufactured using reconstituted natural marble stones or white granite conglomerate. The insert seat is composed by 10 wooden slats offered with three different types of essence pine, okumè or exotic wood (please see respective material sheet). All slats have a section of 55x35 mm, except for the head ones that have a section of 53x53 mm. Slats are fastened to the seat through screws and three stainless steel plates, arranged to ease the water discharge under the slats.

Reinforcing:

The self-levelling base is reinforced and fitted with bushes that permit its lifting and levelling. The seat is also reinforced and endowed with bushes that permit its lifting, and that are covered with a Bellitalia plate after the placement.

Finishing:

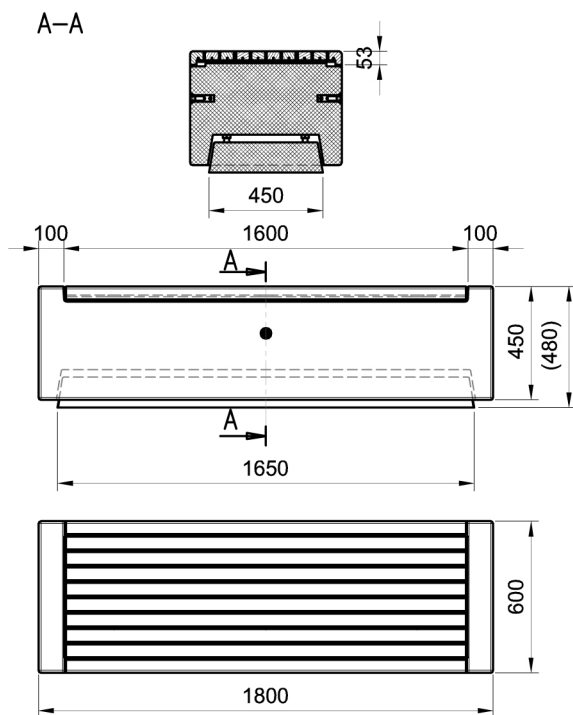
All surfaces are sandblasted, except for the seating surface that can be polished, to give the product a shiny effect, or bush-hammered, for a rough appearance. Surfaces are then covered with a transparent anti-decay coating, or, upon request, with anti-graffiti products. All wooden elements in, pine and okumè can be impregnated and painted with a protective varnish, the exotic wood is impregnated and, upon request, varnished. All edges are rounded or made blunt.

Handling:

Use appropriate equipment when handling.

Installation:

Level the base screws and simply place the bench on the flooring.



“DEMETRA 2DWS” bench

Sheet code: **PAAR046**

Drawing code

Revision: 10/01/2019

Designer:

Bellitalia Design Department



Product:

Linear modular bench model “DEMETRA 2DWS”, composed by a monolithic seat with built-in full wooden seat and backrest, and by a base equipped with a **levelling system**. The bench on request can be equipped with illuminating strips placed longitudinally on the longest side with relative power supply.

Dimensions:

length: 1800 mm;
width: 600 mm;
height: 812 mm (variable);
total weight: 1132 kg.

Material:

The bench can be manufactured using reconstituted natural marble stones or white granite conglomerate. The wooden cladding is composed by 10+4 wooden slats offered with three different types of essence: pine, okumè or exotic wood (please see respective material sheet). All slats have a section of 55x35 mm, except for the head one that has a section of 53x53 mm. Slats are fastened to the seat through screws and three stainless steel plates, arranged to ease the water discharge under the slats.

Reinforcing:

The self-levelling base is reinforced and fitted with bushes that permit its lifting and levelling. The seat is also reinforced and endowed with bushes that permit its lifting, and that are covered with a Bellitalia plate after the placement.

Finishing:

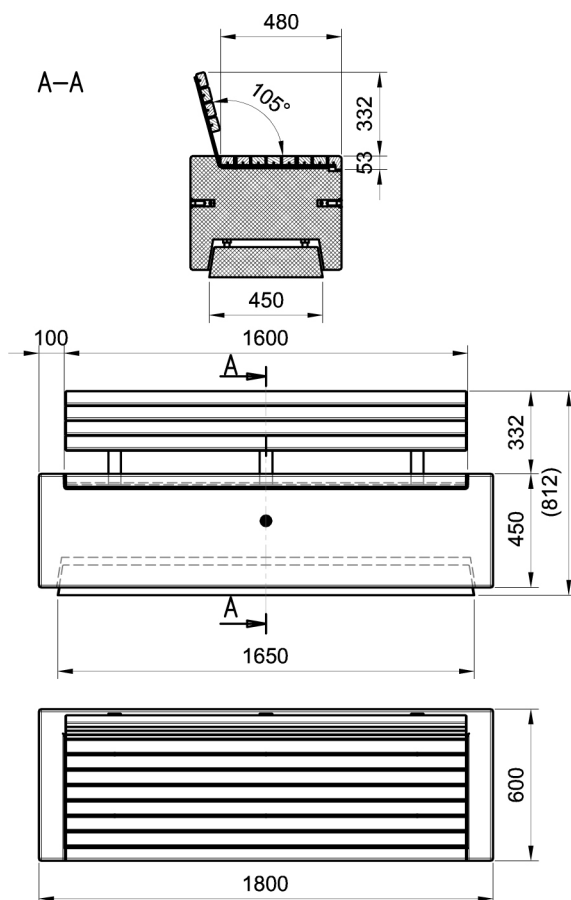
All surfaces are sandblasted, except for the seating surface that can be polished, to give the product a shiny effect, or bush-hammered, for a rough appearance. Surfaces are then covered with a transparent anti-decay coating, or, upon request, with anti-graffiti products. All wooden elements in, pine and okumè can be impregnated and painted with a protective varnish, the exotic wood is impregnated and, upon request, varnished. All edges are rounded or made blunt.

Handling:

Use appropriate equipment when handling.

Installation:

Level the base screws and simply place the bench on the flooring.



“DEMETRA FD” Planter

Sheet code: **FIAR001**

Drawing code:

Revision:

FIAR001

22/01/2019

Designer:

Bellitalia Design Department



Product: Modular, linear and monolithic planter model “DEMETRA FD”, fitted with a **water reserve system** to guarantee the soil the proper humidity level, avoiding the dispersion of internal water. The planter is supported by a base equipped with a **levelling system**.

Dimensions: length: 1800 mm;
width: 600 mm;
height: 470 mm (variable);
total weight: kg 740;
capacity: 170,4 litres.

Material: The planter can be manufactured using reconstituted natural marble stones or white granite conglomerate.

Reinforcing: The self-levelling base is reinforced and fitted with bushes that permit its lifting and levelling. The planter is also reinforced and endowed with bushes that permit its lifting, and that are covered with a Bellitalia plate after the placement.

Finishing: All surfaces are sandblasted, except for the upper rim that can be polished, to give the product a shiny effect, or bush-hammered, for a rough appearance. Surfaces are then covered with a transparent anti-decay coating, or, upon request, with anti-graffiti products. All edges are rounded or made blunt.

Handling: Use appropriate equipment when handling.

Installation: Level the base screws and simply place the planter on the flooring.

